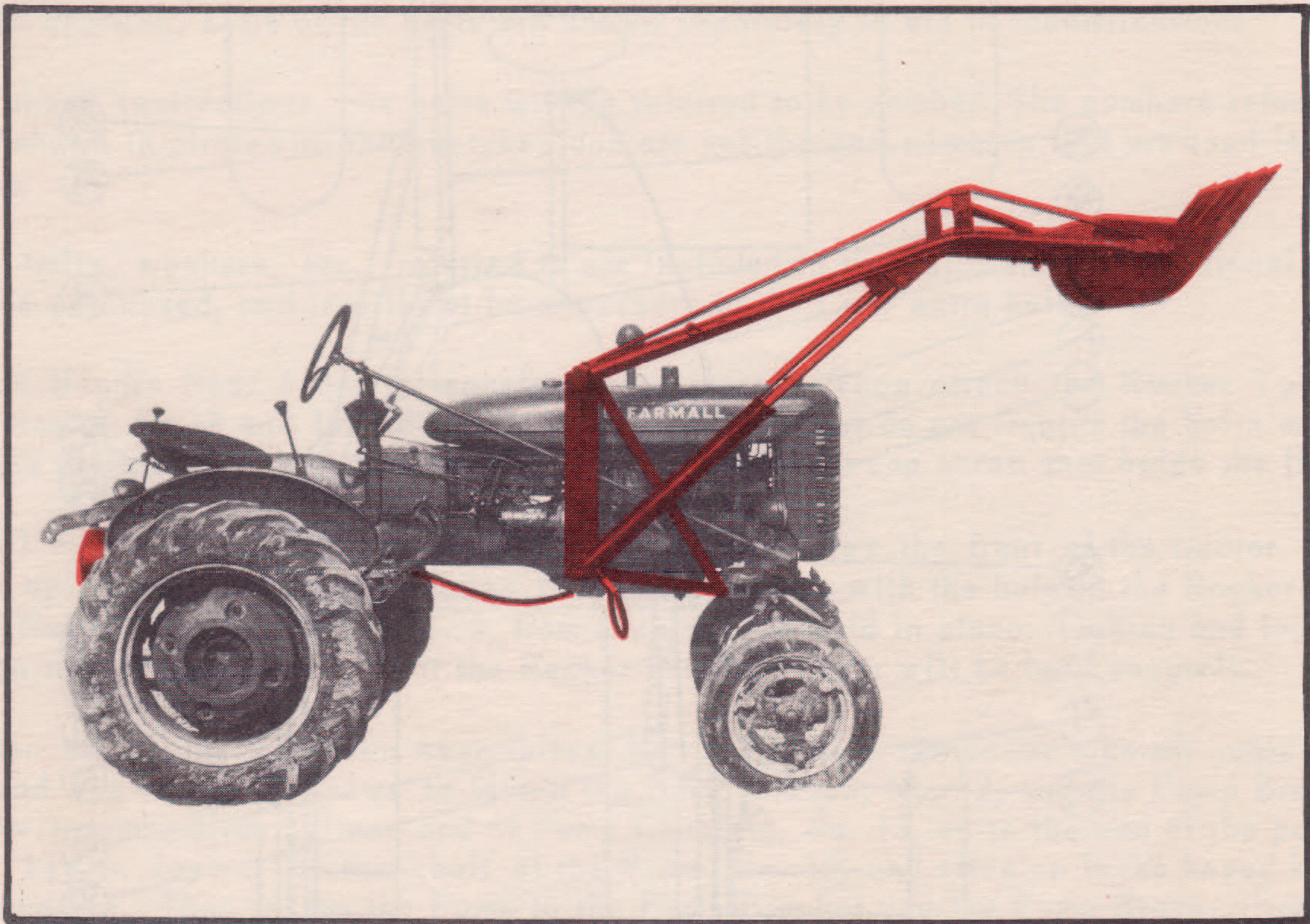


# Parts and Assembly Manual

for HENDERSON MIDGET LOADER MODEL B on

**Farmall Super A and A**

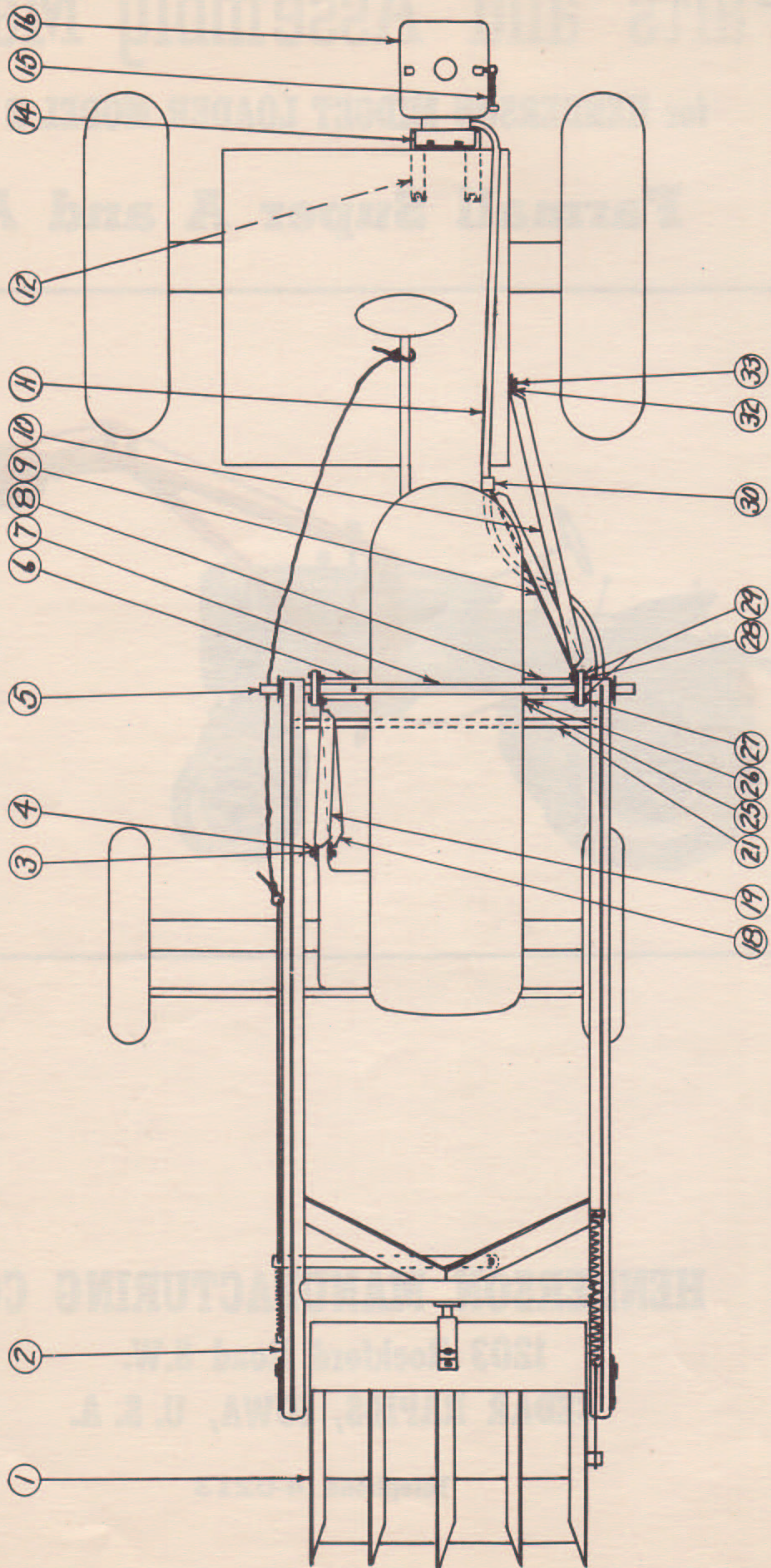


**HENDERSON MANUFACTURING CO.**

1203 Rockford Road S.W.

**CEDAR RAPIDS, IOWA, U. S. A.**

Telephone 4-0213



## PROCEDURE FOR MOUNTING HENDERSON MIDGET LOADER, MODEL B, ON FARMALL A OR SUPER A TRACTORS

Sketches of the Model B Henderson Midget Loader mounted on a Farmall Super A tractor are shown in the sketches on the attached instruction sheet. One view shows it as it would appear from the top looking down and another shows it as viewed from the left side of the tractor. In addition, some of the parts are shown separately to aid in identification.

In these instructions, the parts will be referred to by number. The numbers referred to are the ones shown in circles on the sketches and are not the part numbers that are used for ordering new parts.

All bolts, washers, etc., referred to are included in the shipment. No additional parts will have to be purchased, and it will not be necessary to drill any extra holes.

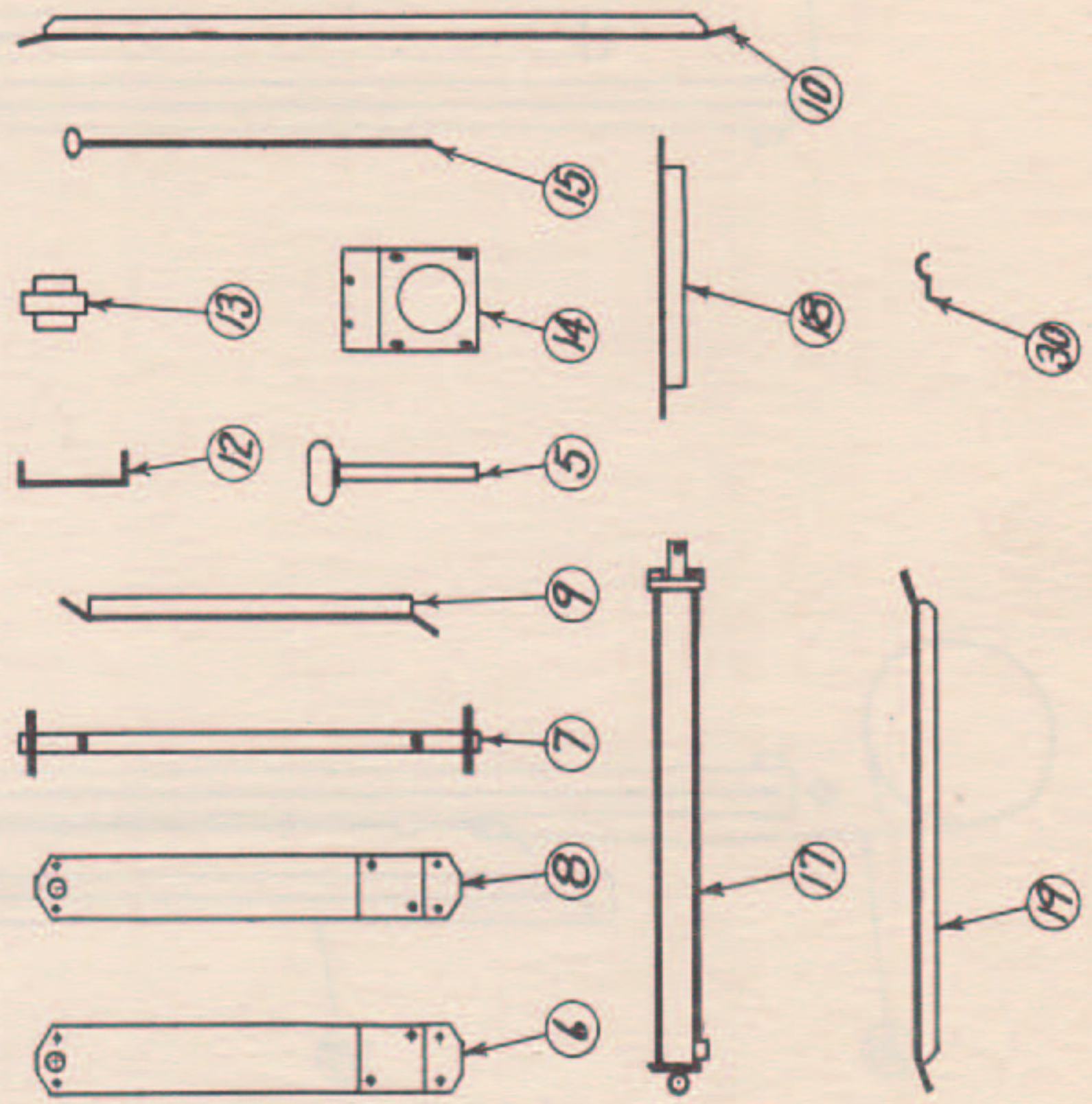
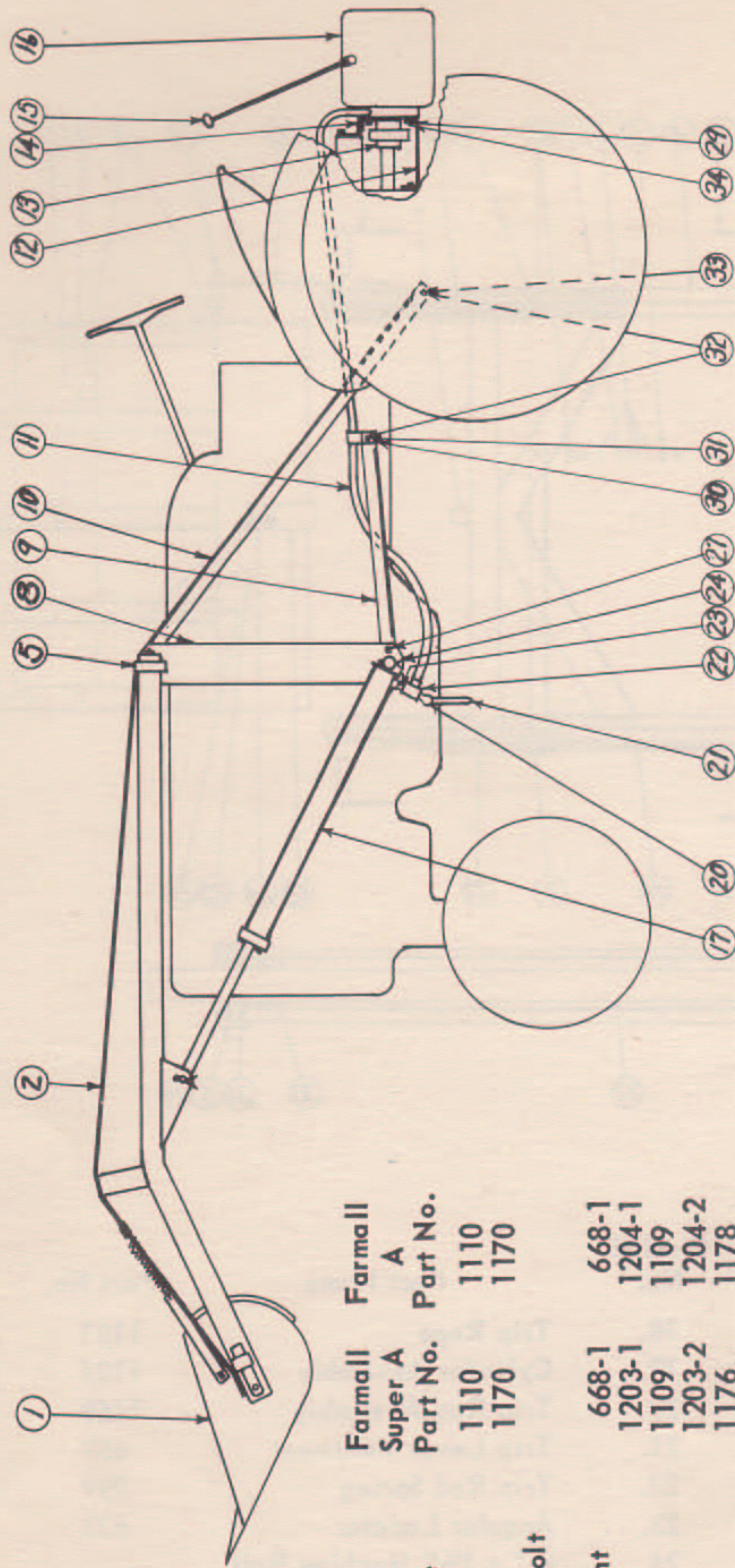
Bolt Mounts Nos. 6 and 8 loosely to the tractor. Then attach the Rocker Tube, No. 7, Braces, Nos. 9, 10, 18 and 19 and the Hose Clip, No. 30, but do not tighten the bolts and screws until those parts are all in place, and then do not tighten the cap screw that holds the Hose Clip.

Pull Frame Assembly, No. 2, up so that it straddles the front of the tractor. Raise the rear end up so that the bearing holes in it are lined up with the hole in the Rocker Tube and insert a Rocker Pin Weldment, No. 5, from each side to hold in place. Tighten and lock the cap screws on the Rocker Tube so that the Rocker Pin Weldments will be held securely.

Then attach the Cylinder Assemblies, No. 17. Remove the power take-off guards from the tractor and use the cap screws to fasten the Pump Braces, No. 12, and the Pump Bracket, No. 14, to the tractor. Slide splined end of Pump Coupling, No. 13, on to the end of the power take-off. Lay key in keyway of the shaft of the Pump, No. 16, and slide on it the keyed half of the Pump Coupling. Then fasten the Pump to the Pump Bracket and the Pump Braces. Before tightening cap screws, be sure that the two halves of the coupling are in close alignment. Lock halves of the coupling in place by tightening set screws. Attach a Valve Lever, No. 15, to the left side of the Pump. It may be bent to put it in the most convenient position. An extra lever is furnished which may be used on the right side of the Pump if it should be desired to use the Pump with equipment containing a double acting cylinder.

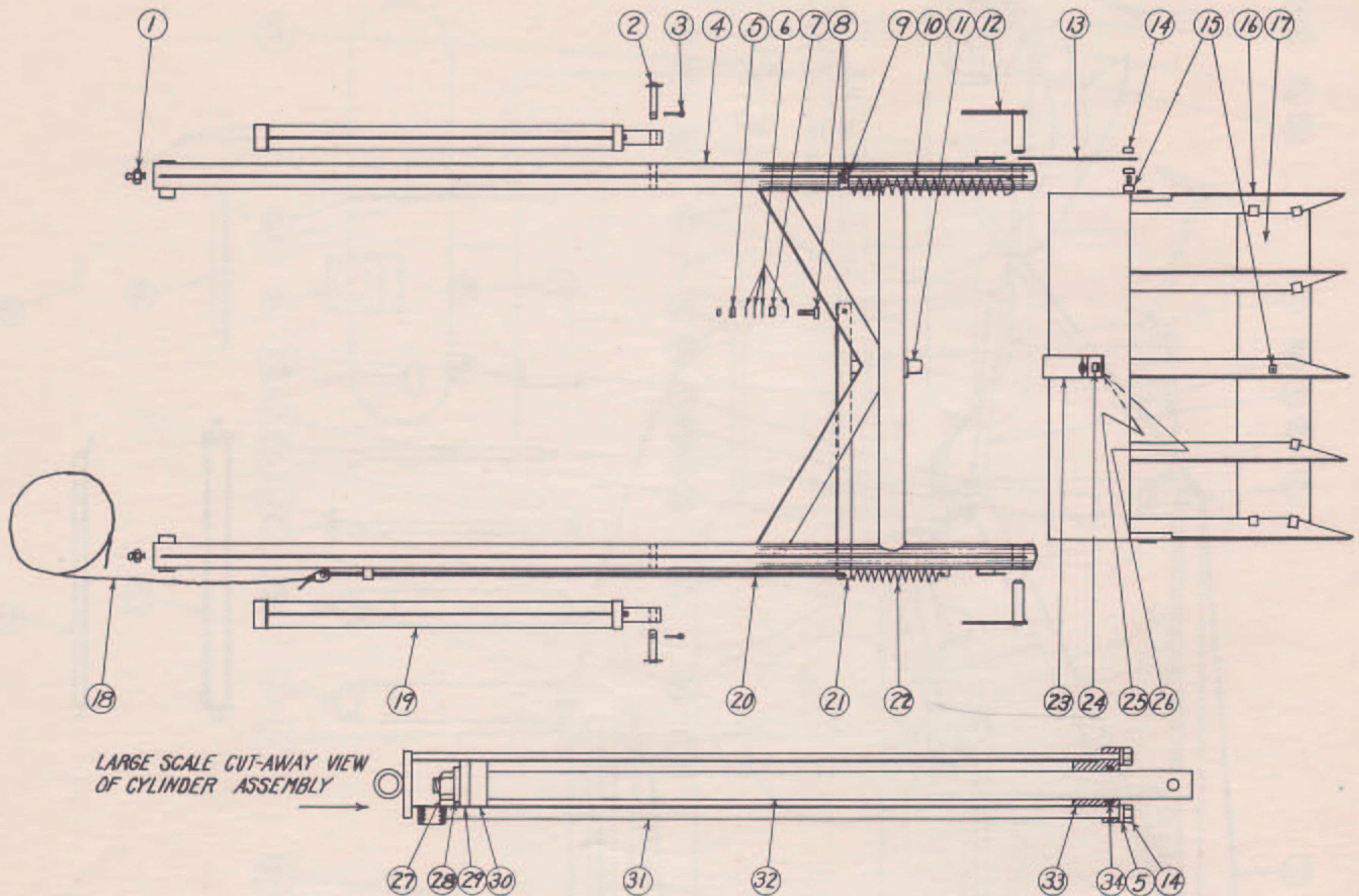
Attach hoses and pipe fittings. For best results, all threads should be coated with white lead before assembly, or paint may be used, to prevent leaks. Tighten the cap screw that holds the Hose Clip. Fill Pump with oil as directed in instructions packed with it. Finally, tie one end of the Trip Rope to the Trip Rod and the other end to the steering column or some other convenient part of the tractor.

Before using, lubricate the bearings and test the loader. Run it up and down to see that it works easily. Watch for leaks in the hydraulic system, especially when lifting a load. Connections should be tightened further if any appreciable leaking is observed, as those leaks will become worse if not taken care of promptly.



Farmall Super A Part No.	Farmall A Part No.
1110	1110
1170	1170
668-1	668-1
1203-1	1204-1
1109	1109
1203-2	1204-2
1176	1178
1205-1	1205-2
1167	1167
934	934
1111	1111
935	935
1112	1112
1106	1106
1104	1104
1175	1175
1206	1206
1108	1108

Circled No.	Part Name	Part No.
1.	Bucket	1110
2.	Frame Assembly	1170
3.	$\frac{3}{4}$ " x 2" Machine Bolt	668-1
4.	$\frac{3}{4}$ " Lock Washer	1203-1
5.	Rocker Pin Weldment	1109
6.	Mount	1203-2
7.	Rocker Tube	1176
8.	Mount	1205-1
9.	Lower Left Brace	1167
10.	Left Rocker Brace	934
11.	Hose, 87" long	1111
12.	Pump Brace	935
13.	Pump Coupling	1112
14.	Pump Bracket	1106
15.	Valve Lever	1104
16.	Pump	1175
17.	Cylinder Assembly	1206
18.	Lower Right Brace	1108
19.	Right Rocker Brace	
20.	$\frac{1}{2}$ " Street Elbow	
21.	Connecting Hose, 40" long	
22.	$\frac{1}{2}$ " Pipe Tee	
23.	$\frac{1}{2}$ " x 2" Pipe Nipple	
24.	$\frac{1}{4}$ " x $1\frac{1}{2}$ " Cotter Pin	
25.	$\frac{5}{8}$ " Lock Washer	
26.	$\frac{5}{8}$ " x 2" Cap Screw	
27.	$\frac{1}{2}$ " x $1\frac{1}{2}$ " Machine Bolt	
28.	$\frac{1}{2}$ " x 2" Machine Bolt	
29.	$\frac{1}{2}$ " Lock Washer	
30.	Hose Clip	1158
31.	Cap Screw	$\frac{3}{4}$ " x $1\frac{1}{2}$ " See 26
32.	Lock Washer	See 4 See 25
33.		See 31 $\frac{5}{8}$ " x $2\frac{1}{2}$ " Machine Bolt
34.	$\frac{1}{2}$ " x 1" Cap Screw	



Circled No.	Part Name	Part No.	Circled No.	Part Name	Part No.
1.	1/8" Zerk Grease Fitting		18.	Trip Rope	1101
2.	Piston Pin Weldment	656	19.	Cylinder Assembly	1104
3.	3/16" x 1/4" Cotter Pin		20.	Trip Rod Assembly	1169
4.	Frame Weldment	1165	21.	Trip Lever Weldment	659
5.	3/8" Lock Washer		22.	Trip Rod Spring	999
6.	3/8" Plain Washer		23.	Angular Locator	623
7.	Bushing	657	24.	1/2" x 1 1/2" Machine Bolt	
8.	3/8" x 1 1/2" Machine Bolt		25.	1/2" Lock Washer	
9.	Spring Adjusting Clamp	1164	26.	1/2" Plain Washer	
10.	Bucket Spring	998	27.	3/4" Nut	
11.	Latch Pin	1156	28.	Piston Head	536
12.	Bucket Pin Weldment	1143	29.	Leather Cup Packing	1102
13.	Bucket Spring Strap	1163	30.	Piston Guide	537
14.	3/8" Nut		31.	Cylinder Weldment	1103
15.	3/8" x 1" Machine Bolt		32.	Piston Rod	628
16.	Bucket	624	33.	Cylinder Head	625
17.	Loose Plate	644	34.	O-Ring	1100